



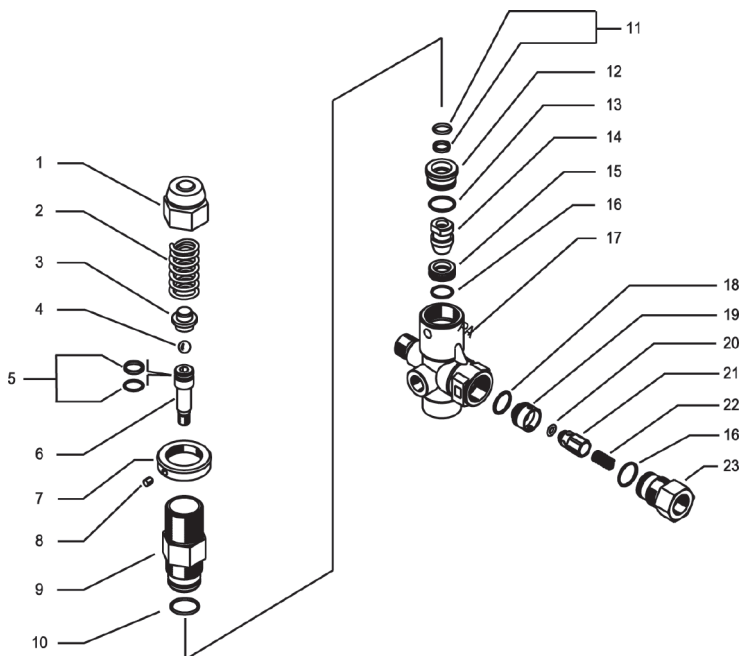
### SPECIFICATIONS

<b>Part Number</b>	<b>YU5075KS</b>	
Operating Pressure	5100 PSI	
Maximum Pressure	5650 PSI	
Maximum Flow	10.5 GPM	
Temperature	195°F	
Port Sizes:	Inlet	3/8" BSP-M
	Discharge	3/8" BSP-F
	Bypass	1/2" BSP-F
Dimensions	3.6" x 1.4" x 5.3"	
Shipping Weight	2.0 lbs.	
Materials	Brass, Stainless, Buna-N	

### FEATURES

- Premium pressure compensated unloader for low spike pressures.
- Adjustable maximum pressure settings
- Stainless Steel internal components for maximum durability

### PARTS LIST



Item	Part Number	Description	KIT	Qty
1	Y60172731	Brass Cap		1
2	Y60181261	Spring, D4.4 x 15.8 x 47		1
3	Y60181331	Spring Guide		1
4	Y14744310	SST Ball, 11/32"	*	1
5	Y60097824	Piston Seal, Upper Assy.	*	1
6	Y60180651	SST Piston		1
7	Y60172831	Nut, M27 x 1		1
8	Y16210000	Screw, M4 x 4		1
9	Y60180531	Piston Housing		1
10	Y10307201	O-ring, 1.78 x 20.35	*	1
11	Y60097924	Piston Seal, Lower Assy.	*	1
12	Y60181031	Spacer		1
13	Y10306801	O-ring, 1.78 x 17.17	*	1
14	Y60180851	SST Shutter, M8	*	1
15	Y60180951	SST Seat	*	1
16	Y10306601	O-ring, 1.78 x 15.6	*	2
17	Y60180135	Valve Body		1
18	Y10306400	O-ring, 1.78 x 14	*	1
19	Y60180751	Check Valve Seat, SST		1
20	Y10321308	O-ring, 3 x 6	*	1
21	Y60005251	Hex Check Valve, SST		1
22	Y60005351	Spring		1
23	Y60181131	Outlet Fitting, 3/8" BSP-F		1

\* Y60181824 Repair Kit



General Pump  
is a member of  
the Interpump Group



Ref 300353 Rev. C  
10-08



GENERAL PUMP